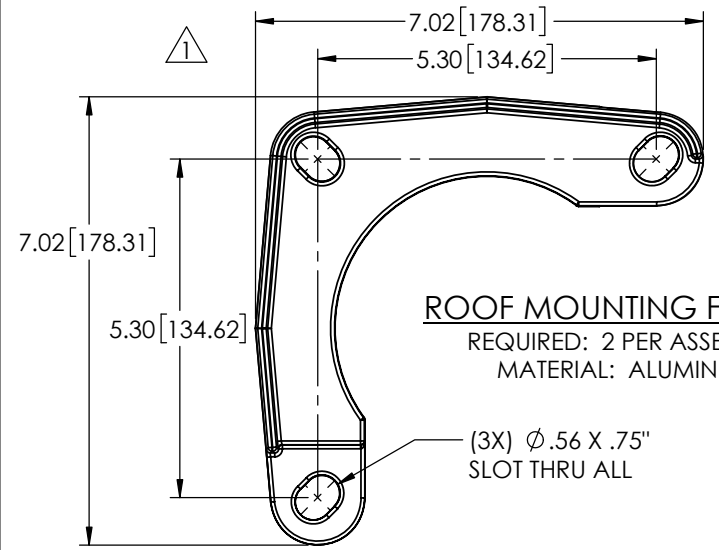
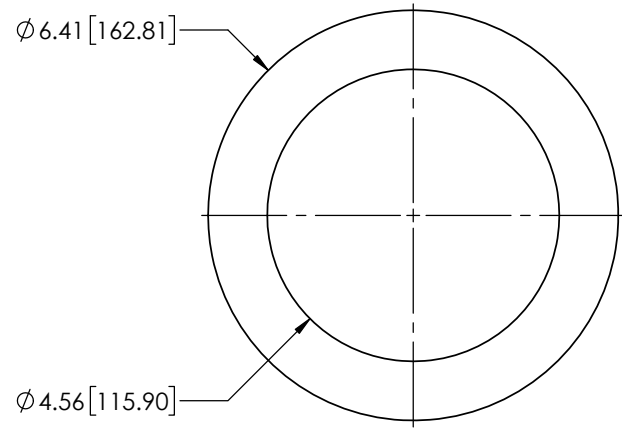
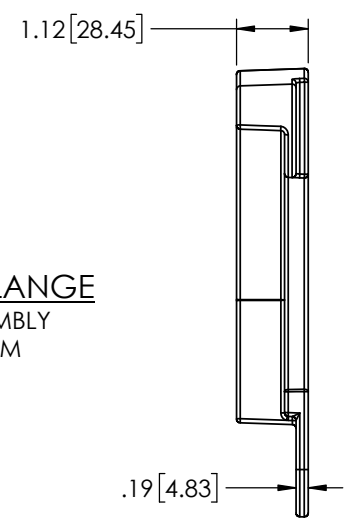


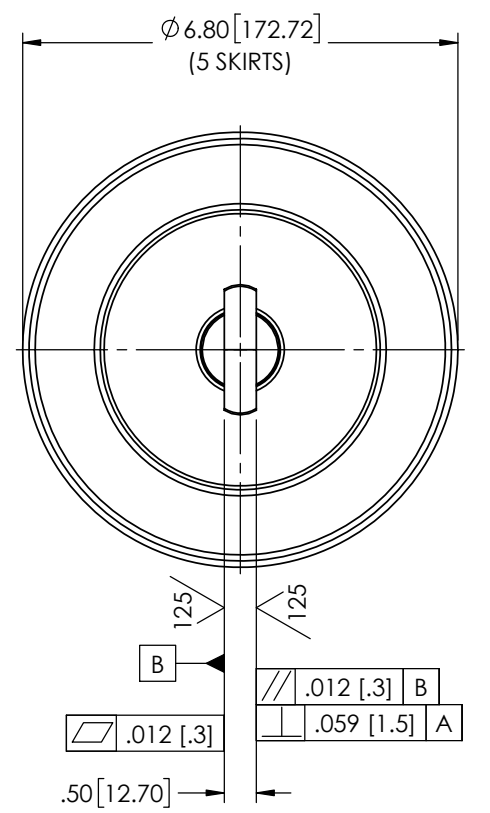
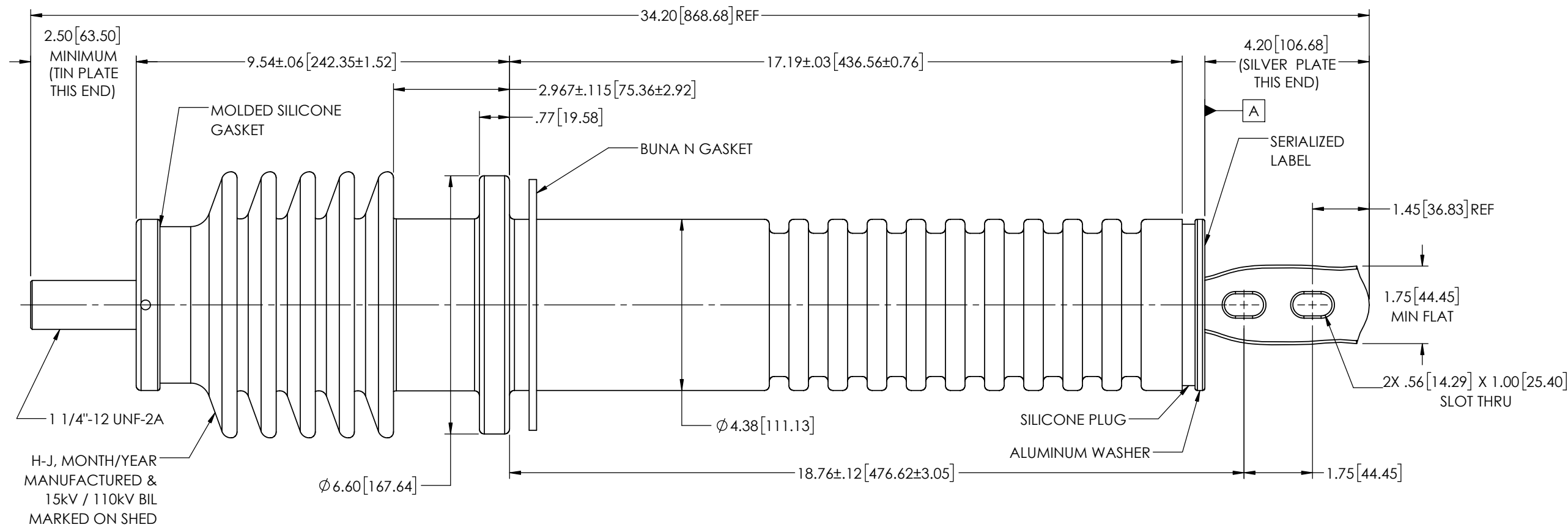
REVISIONS					
REV.	DATE	ECN #	DESCRIPTION	BY	APPROVED
1	3/22/2023	HJ23-058	WAS CO-5034-02P	OAD	CLS



ROOF MOUNTING FLANGE
 REQUIRED: 2 PER ASSEMBLY
 MATERIAL: ALUMINUM



BUSHING TO ROOF GASKET
 REQUIRED: 1 PER ASSEMBLY
 MATERIAL: .19" ±.020 THICK NITRILE BUNA N



TECHNICAL CHARACTERISTICS		COMPONENTS	MATERIAL
SPECIFICATIONS	VALUE	INSULATOR	WET PROCESS PORCELAIN
RATED MAXIMUM VOLTAGE	15kV	CONDUCTOR	COPPER C11000
RATED CONTINUOUS CURRENT	1250A	TERMINAL	
BASIC IMPULSE LEVEL (BIL)	110kV	TOP	TIN PLATED
RATED FREQUENCY WITHSTAND (DRY) - 60s	50kV	BOTTOM	SILVER PLATED
RATED FREQUENCY WITHSTAND (WET) - 10s	45kV	GASKET	NITRILE BUNA N
CREEP DISTANCE		CLAMP	ALUMINUM
TOP	15.97" [405.64mm]	NOTES:	
BOTTOM	21.18" [537.97mm]	1. PORCELAIN TOLERANCE ±3% WITH NOTHING LESS THAN ±.03", UNLESS OTHERWISE NOTED.	
STRIKE DISTANCE		2. APPROVED FOR COASTAL AND HIGH CONTAMINATION ENVIRONMENTS.	
TOP	8.19" [208.03mm]		
BOTTOM	14.34" [447.04mm]		
CANTILEVER OPERATING LOAD	625N		
CANTILEVER TEST LOAD	1250N		
INSTALLATION TORQUE	130 in-lb		
PORCELAIN COLOR	GRAY - MUNSELL 5BG 7.0/0.4		
APPROXIMATE WEIGHT	38.9lb [17.6kg]		

PROPRIETARY AND CONFIDENTIAL
 THE INFORMATION CONTAINED IN THIS DRAWING IS THE SOLE PROPERTY OF H-J ENTERPRISES, INC. ANY REPRODUCTION IN PART OR AS A WHOLE WITHOUT THE WRITTEN PERMISSION OF H-J ENTERPRISES, INC. IS PROHIBITED.

TOLERANCES (EXCEPT AS NOTED)	
DECIMAL	± .032"/.8mm
FRACTIONAL	±
ANGULAR	± 2 Degrees



H-J ENTERPRISES, INC.			
3010 HIGH RIDGE BLVD. HIGH RIDGE, MO. 63049 USA PHONE 1-636-677-3421 FAX 1-636-376-1915			
AIR-TO-AIR PORCELAIN BUSHING ASSEMBLY 110kV BIL • 15kV • 1250A			
MATERIAL SEE DRAWING			
CHK'D	CJT	APP'D	2/1/22
DRAWING NO.		AS1853-002	
DRAWN BY		OAD	
DATE		2/1/2022	
SCALE		N.T.S.	